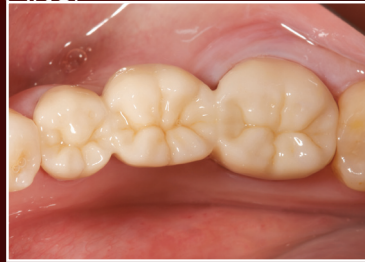


# BruxZir®

Before



After



Prescribe **BruxZir** instead of metal occlusals and cast gold

- ❖ Ideal for bruxers who have destroyed natural teeth or previous dental restorations.
- ❖ An esthetic alternative to metal occlusal PFM and cast gold crowns & bridges.
- ❖ Conservatively prepare as thin as 0.5 mm with feather edge margins, much like you would cast gold.



For more information, visit [www.bruxzir.com](http://www.bruxzir.com)

Virtually Unbreakable

# BruxZir®



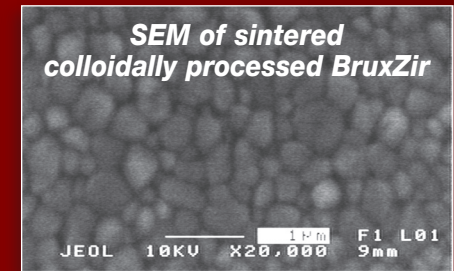
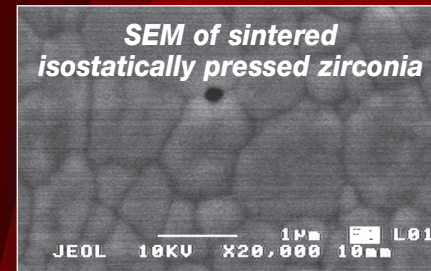
Solid Zirconia  
Crowns & Bridges



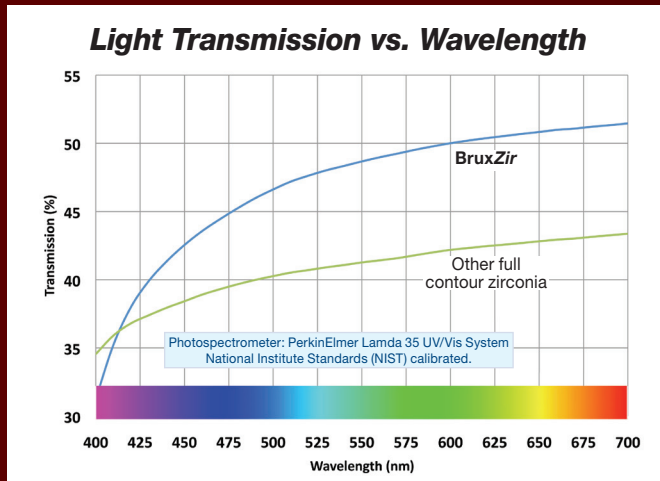
# BruxZir® is more brawn than beauty

## Scientific validation

BruxZir Solid Zirconia crowns & bridges are made from the highest quality zirconia powder from Japan. We chemically and physically reprocess the powder to further reduce the zirconia particle sizes. BruxZir milling blanks are then created through a unique patent-pending process. Unlike conventional high-pressure milling blank manufacture, our processing gives BruxZir improved light transmission, which provides a lower, more natural shade value.



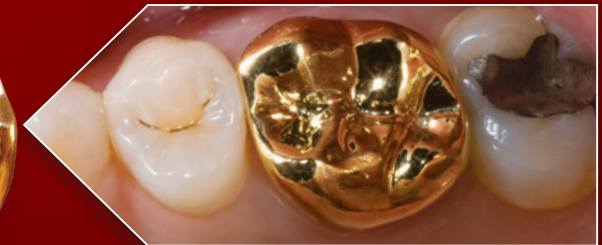
BruxZir's 50% smaller average grain size improves its physical properties.



BruxZir exhibits higher light transmission, resulting in a more natural shade value.



BruxZir Solid Zirconia Crown

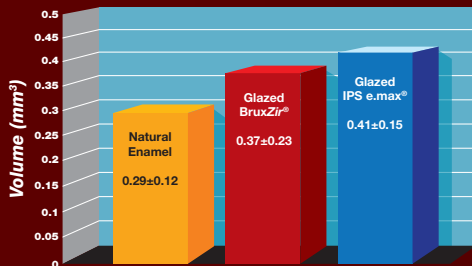


Gold Crown



Porcelain and Metal Crown

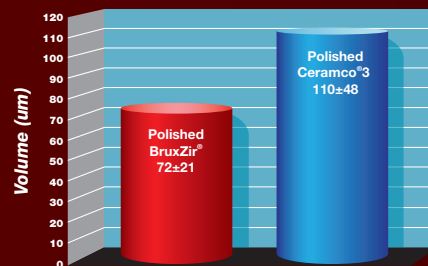
### Wear Compatibility



In a recent study<sup>1</sup> to measure the volumetric loss of enamel, glazed BruxZir was found to wear compatible with enamel and virtually identical to glazed IPS e.max.

1. Wear of Enamel on Polished and Glazed Zirconia: Shah S, Michelson C, Beck P, et al. 2010; Washington, DC: AADR. Abstract #129615.

### Antagonist Wear



The antagonistic (Steatite balls) wear shows BruxZir only with 72±21 microns, which is significantly lower than Ceramco®3 (110±48 microns). The University of Tübingen study was run using an eight chamber Willytec Chewing Simulator at 1.2 million cycles.